



Concert Hall
Technical Rider



CONSTRUCTION DETAILS.....	2
HALL DIMENSIONS	2
STAGE DIMENSIONS.....	2
WINGS AND DRESSING ROOMS.....	2
REHEARSAL STUDIO	3
LOADING DOCK.....	3
HALL CAPACITY	3
FURNITURE AND ACCESSORIES	3
TECHNICAL STAFF	4
ELECTRICITY	3
CURTAINS	4
RIGGING	5
LIGHTNING EQUIPMENT	5
SOUND EQUIPMENT	6
VIDEO PROJECTION EQUIPMENT.....	8
INTERCOM AND AUDIO BROADCAST SYSTEMS.....	8
RECORDING	9
STAFF CONTACT.....	9
ANNEX 1 - STAGE DIMENSIONS AND ACCESS.....	10
ANNEX 2 - ELECTRICAL PLAN & RIGGING	11
ANNEX 3 - SEATING PLAN.....	12

CONSTRUCTION DETAILS

The Concert Hall was designed for optimum acoustics. Its height, form and judicious choice of building materials all contribute to its outstanding acoustics. A wrap-around balcony overlooks the stage and main level creating an intimacy between the public and the performer. The balance between absorptive and reflective surfaces provides flexible acoustics. This is achieved through the use of thick curtains that can be extended or retracted, hard surfaces and the panels at the back of the stage which can be pivoted. The Hall is quiet since it is entirely isolated from the backstage support spaces and from the mechanical systems, (HVAC). Sound and light locks are found at each door leading into the Hall.

Although the Hall was built for musical performance, it is very versatile allowing for the presentation of many diverse events: children shows, theatre, musical comedy, opera and pop music.

HALL DIMENSIONS

- Height: 58'6" (18m)
- Width: 68'3" (21m)
- Length: 113' 7" (35m)

STAGE DIMENSIONS

The Concert Hall doesn't have a proscenium.

- Stage height: 3'4" (1m)
- Front stage width: 50' (15m)
- Back stage width: 33'1" (10m)
- Front stage to back wall: 39'2" (12m)
- Clearance underneath sound reflector: +/-35' (11m)
- From control booth to stage: 40' (12m)

See annex 1 p.10

WINGS & DRESSING ROOMS

A corridor that circles the stage area serves as the wings.
Curtains can also be added to create wings directly on the stage.

Dressing rooms are at stage left.

	Dressing room 1	Dressing room 2	Dressing room 3	Orchestral dressing room
Width	14'	8'	8'	12'
Length	12'	12'	12'	7'
Mirror	Yes	Yes	Yes	Yes
Bathroom	Yes	Shared		4
Shower	Yes	Shared		X

The dressing rooms all share a rest area leading to the stage entrance.

Width: 12' 5" (3,5m)

Length: 44" (13m)

REHEARSAL STUDIO

The Concert Hall doesn't have a rehearsal studio as such; however there are many rehearsal spaces on campus, in the services pavilion and student residence.

LOADING DOCK

- Width: 18' (5.5m)
- Length: 16' (5m)
- Loading dock is on the same level as the stage.
- The only access from loading dock to stage is via a corridor 6'6" by 6" (1,98m by 1.83m) at its narrowest point.

See annex 1 p.10

HALL CAPACITY

- Orchestra: 380
- Wheelchairs: 8
- Balcony: 224
- **Total: 604**

For seating plan see annex 3 p.12

FURNITURE AND ACCESSORIES

Risers:

- 11 - 4' X 8' sections (1,22 m X 2,44 m)
- 2 - 4' X 4' sections (1,22 m X 1,22 m)
- 36 - 8" legs
- 36 - 16" legs
- 36 - 24" legs
- 1 beige wooden choir riser (approx. 60 people)

Music stands:

- 60 plastic stands
- 10 high metal stands
- 5 low metal stands
- 4 conductor stands

Chairs:

- 70 plastic orchestra chairs 17.5"
- 40 cushioned orchestra chairs 18.5"
- 20 cushioned orchestra chairs 17.5"

Others:

- 1 conductor's podium

- 14 wooden cello "T's"
- 4 adjustable bass stools (no backs)
- 12 stand lamps
- 1 9' German Steinway concert grand piano (tuning fees not included), tuned A-442
- 1 9' American Steinway 9' concert grand piano (tuning fees not included), tuned A-440
- 1 adjustable piano chair
- 1 Bass amp Eden traveller 550 with 115XLT and 410XLT

TECHNICAL STAFF

We will refer you to a professional technical team acquainted with the equipment and premises. The number of technicians will vary according to the specific needs of each production. A free estimate can be provided on request.

ELECTRICITY

Stage power supply:

- 1 panel, 400 amps, 3 phase, 120/208V «camlock» right stage (lightning)
- 1 panel, 200 amps, 3 phases, 120/208V «camlock» left stage (sound) , fixed power supply with 8 TL3 20A circuits and 2 TL4 30A circuits

Loading dock power supply:

- Easy access for a mobile video and 3 access traps for cabling
- 1 panel, 200 amps, 3 phases, 120/208V «camlock»

CURTAINS

The Concert Hall doesn't have curtains or a proscenium. Stage and surrounding walls are made of natural untreated maple. However, for productions requiring a sound system and extra lightning, we do install black curtains around the stage and black dance mats on the stage.

All legs and backdrop curtains must be suspended on the same rigging as the lightning

Bear in mind that adding curtain legs on the first lightning rigging (2' downstage), does impede view from the seating on the sides. So, if possible, it's important to plan installation of the first pair of curtains legs on the second rigging (10' downstage).

- 10 backdrops (13' x 26')
- 10 backdrops (17' x 26')
- 5 pairs of 2 curtain legs
- 4 borders
- 6 self standing curtains . Choice of 12' x 15' or 12' x 22'

RIGGING

- 10 electrical hoists, capacity 1 ton, integrated into the lighting canopy situated 35' above the stage. These hoists are used for lightning AND curtains
- 28 anchor points, capacity 2000 pounds are also available (see annex 2 p.12)
- 4 chain hoists, capacity 1 ton

LX	Electrical hoists	Front stage distance	Distance between hoists	Maximum lenght
1	1-2	2'	24'	48'
2	3-4	10'	24'	44'
3	5-6	18'	24'	40'
4	7-8	26'	24'	36'
5	9-10	34'	24'	34'

See annex 2 p.11

LIGHTNING EQUIPMENT

Control booths:

- 1 position: soundproof booth separated from the concert hall at the rear of the main level
 - 1 position: row M in the concert hall
- See annex 1 p.10

Consoles:

- 1 micro MA lightning
- 1 ETC Idea
- 1 ETC Element 40-250

Dimmers:

See annex 2 p.11

- 48 dimmers ETC 2.4 kW (right stage)
- 6 fixed dimmers on stage level (3 left, 3 right)
- 18 fixed dimmers on footbridge (9 left, 9 right)
- 9 fixed dimmers for FOH
- 1 mobile feeder camlock 150'

Permanent lightning:

- 11 ETC Source Four 575W 10° profile spotlights (FOH)
- 3 additionnal lens for ETC Source Four 575w 10° profile spotlights (FOH)
- 1 Robert Juliat Aramis follow spot (center FOH)

Portable lightning:

- 14 ETC Source Four 575W 19° profile spotlights
- 10 ETC Source Four 575W 36° profile spotlights
- 8 ETC Source Four 575W 26° profile spotlights
- 6 ETC Source Four 750W varifocal 15°-30° profile spotlights
- 6 Fresnels Strand 8'' 2 kW with shutters
- 6 Fresnels Selecon 6'' 1 kW with shutters
- 12 individual PAR64; choice of medium, wide and narrow lamps
- 6 bars of 6 PAR64
- 4 bars of 4 par ACL
- 4 Giotto spot CMY-400 (additional fees apply)

Others:

- 16 aluminum truss (8'x16''x16'')
- 4 aluminum truss (10'x16''x16'')
- 4 aluminum truss (4'x16''x16'')
- 1 MDG Atmosphere fog generator (additional fees apply)
- 12 ETC gobo holder
- 8 drop iris for etc source four
- 8 floor plates for booms
- 8 x 6' poles for booms
- 8 x 4' poles for booms
- 4 x 16' aluminum poles

SOUND EQUIPMENT**Control booths:**

1 position: soundproof booth separated from the concert hall at the rear of the main level, perfect for concert recording

1 position: row M in the concert hall

See annex 1 p.10

Consoles:

- 1 analog mixing board Midas Sienna 48 inputs
- 1 analog mixing board Mackie 16 inputs
- 1 digital mixing board Berhinger X32 compact
- 1 stagebox Berhinger S16 (16-8)
- 1 digital mixing board Midas Pro2
- 1 stagebox MidaS DL351 (48-8)

Front of house:

- 2 main speakers Meyer CQ1 (stage level)
- 2 main speakers Meyer CQ 2 (suspended)
- 2 subwoofer Meyer 700HP (stage level))
- 6 EAW JF-60 (front-fills) (4 stage level, 2 balcony)
- 2 CROWN CE-1000 amps (front-fills)
- 1 Soundweb signal processor

Monitor system:

- 4 electrovoice SAX-250 stage monitors
- 4 electrovoice ETX-15P stage monitors
- 2 electrovoice ETX-12P stage monitors
- 4 Dynacord AM-12 stage monitors
- 1 equalizer rack with 3 DBX 2231 (6 mixes)

Snakes:

- 1 snake, 50 pairs (control booth to stage right)
- 1 patch box isolated, 50 pairs
- 1 portable snake 8 pairs (5-3) 75'
- 1 portable snake 8 pairs (8-0) 75'
- 2 portable snake 16 pairs (12-4) 100'
- 1 portable snake 40 pairs (32-8) 150'

Processor rack:

- 1 KLARK TEKNIK DN360 2 X 31 bands equalizers
- 1 T.C. ELECTRONICS M-3000 multi effects
- 1 Yamaha SPX990 multi effects
- 1 T.C. ELECTRONICS D-TWO delay
- 1 DBX 1066 stereo compressor
- 1 DBX1046 quad compressor
- 1 DBX 160A mono compressor
- 1 DBX 166A dynamic compressor
- 2 Rane PE17 equalizers
- 1 DRAWMER DS-400 gate
- 2 Tascam O1U CD players

SOUND EQUIPMENT (CONT'D)

Microphones:

- 1 Shure Beta 52
- 2 Shure Beta 57
- 3 Shure SM-81
- 2 Shure Beta 91
- 11 Shure SM 58
- 4 Shure sm57
- 2 Sennheiser 421
- 4 Sennheiser E604
- 2 Sennheiser E609
- 3 Beyer mc 713
- 2 AKG C-414
- 1 AKG C-535
- 1 Audiotechnica 4033
- 4 Crown PCC 160
- 3 Audio-Technica ATM-35
- 2 Shoeps CMC6U
- 4 Neuman KM184
- 2 Neuman TLM103
- 2 countryman 85 direct boxes
- 2 Proco db1 direct boxes
- 4 Radial pro48 active direct boxes
- 4 Radial pro48 stereo active direct boxes
- 2 Radial proDI passive direct boxes

- 2 BSS AR133 direct boxes
- 1 Shure SLX wireless receiver with sm58 microphone (additional fees apply)
- 1 Shure UR4+ dual UHF receiver (additional fees apply)
Choice of 2 UR2 handheld transmitters w/ SM58 or BETA87c capsule or 2 UR1 beltack
- 2 Shure Headset microphones wcm16
- 2 Countryman iE6 headset microphones beige (omnidirectionnel)
- 2 Sennheiser wireless microphone receiver
Choice of e935 microphone or clip-on microphone (additional fees apply)

Stands:

- 12 long microphone stands with booms K&M (black)
- 11 short microphone stands with booms K&M (black)
- 4 straight microphone stands with round base (Atlas)
- 5 short tabletop microphone stand K&M (noir)
- 6 long microphone stands with booms (silver)
- 5 short microphone stands with booms (silver)
- 2 extra long microphone stands for recording
- 1 permanent rig for 2 suspended microphone (recording ORTF)

VIDEO PROJECTION EQUIPMENT

Equipment:

- 1 Infocus w260 2500 lumens (additional fees apply)
- 1 Nec NP500 3000 Lumens (additional fees apply)
- 1 Nec NP4000 5200 lumens (additional fees apply)
- 1 Christie HD 10K-M 10 000lumens (fixed position at mixing boot) (additional fees apply)
- 1 Kramer Vp-771 switcher / scaler

Screens:

- 1 self standing 4' x 6'
- 1 self standing 6' x 8'
- 1 portable screen 9' X 12' (front and back)
- 1 motorized screen up to 4:3 (30' x 22'5")

This screen is always installed on a truss. This truss must be on 2 permanent electrical hoist (additional fees apply).
See annex 2 p.11

INTERCOM AND AUDIO BROADCAST SYSTEMS

- 1 CLEAR-COM MS222 main station (left stage)
- 5 belt packs with headset
- 1 telephone style headset
- Audio broadcast system in dressing rooms
- Broadcasting system for the hearing impaired (FM broadcast with portable unit)

RECORDING

With its unique acoustics and quiet, Concert Hall is the perfect place for recording.

Recording booths:

- 1 position: soundproof booth separated from the concert hall at the rear of the main level, perfect for concert recording.
- 1 position: in the orchestra dressing room, backstage, this booth can be surrounded with velvet acoustic curtains 360°, ideal for recording without an audience.

Recording / archiving services are also available on demand (additional fees apply):

- 1 permanent rig for 2 suspended microphone (recording ORTF)
- 1 HHB CDR830 CD writer
- 1 Aphex 2070 dual channel preamp
- 1 Behringer Tube Composer T1952
- 1 M-Audio Computer external sound card with 2 inputs
- 1 Usb audio card Focusrite Scarlett 18i20

STAFF CONTACT

Le Domaine Forget
5, rang St-Antoine, P.O. Box 672
Saint-Irénée QC G0T 1V0
Canada
Main number: 418 452-8111
Tickets / Reservations: 418 452-3535 – 1 888 336-7438
Reservations/Accommodations: 418 452-8111 – 1 888 336-7438

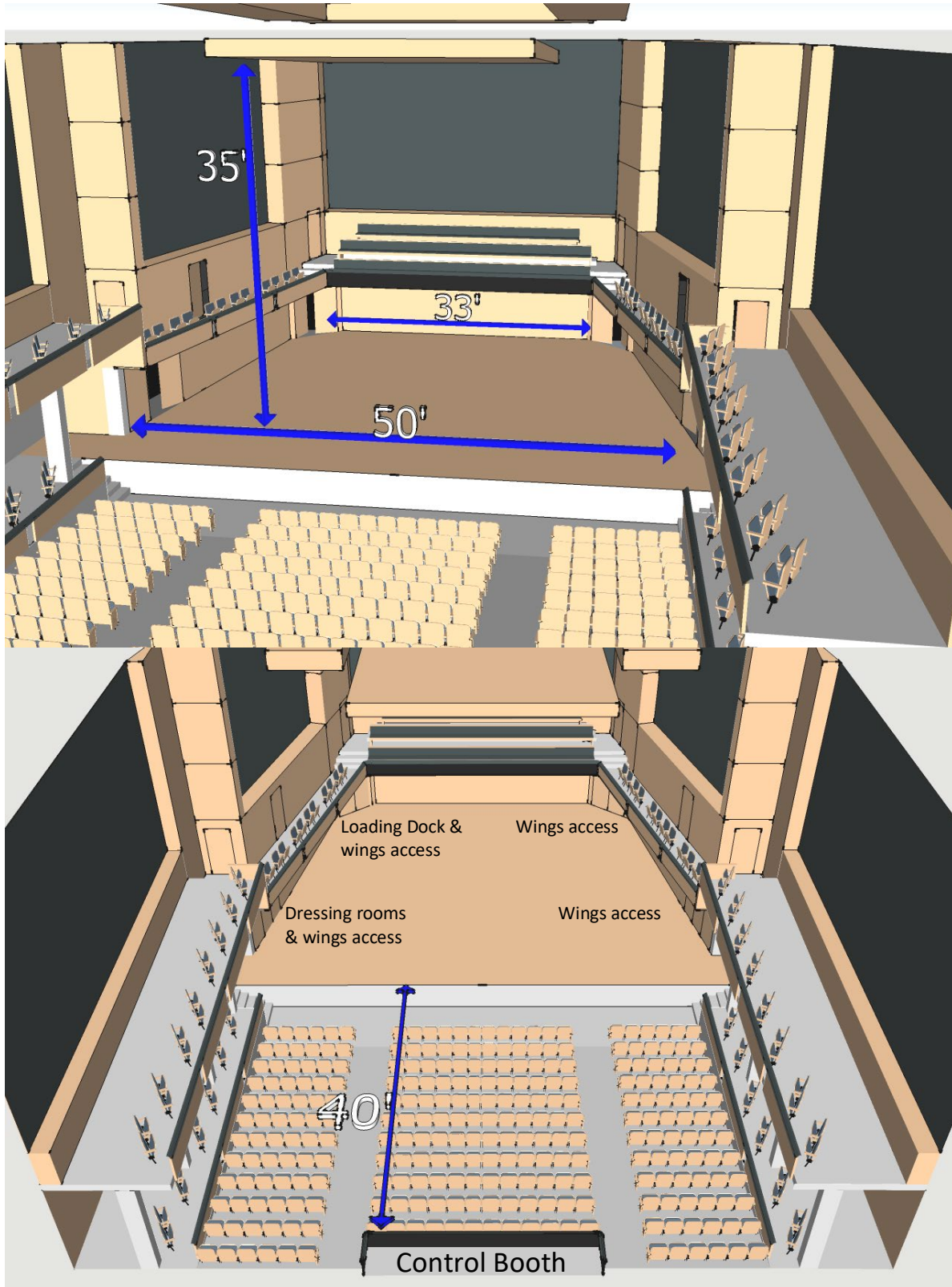
Technical director:
Alexis Tremblay: 418 452-8113 ext. 1240 | dt@domdaineforget.com

Lodging coordinator and Studio Reservations:
Gabrielle Poulin: 418 452-8113 ext. 1405 | gpoulin@domaineforget.com

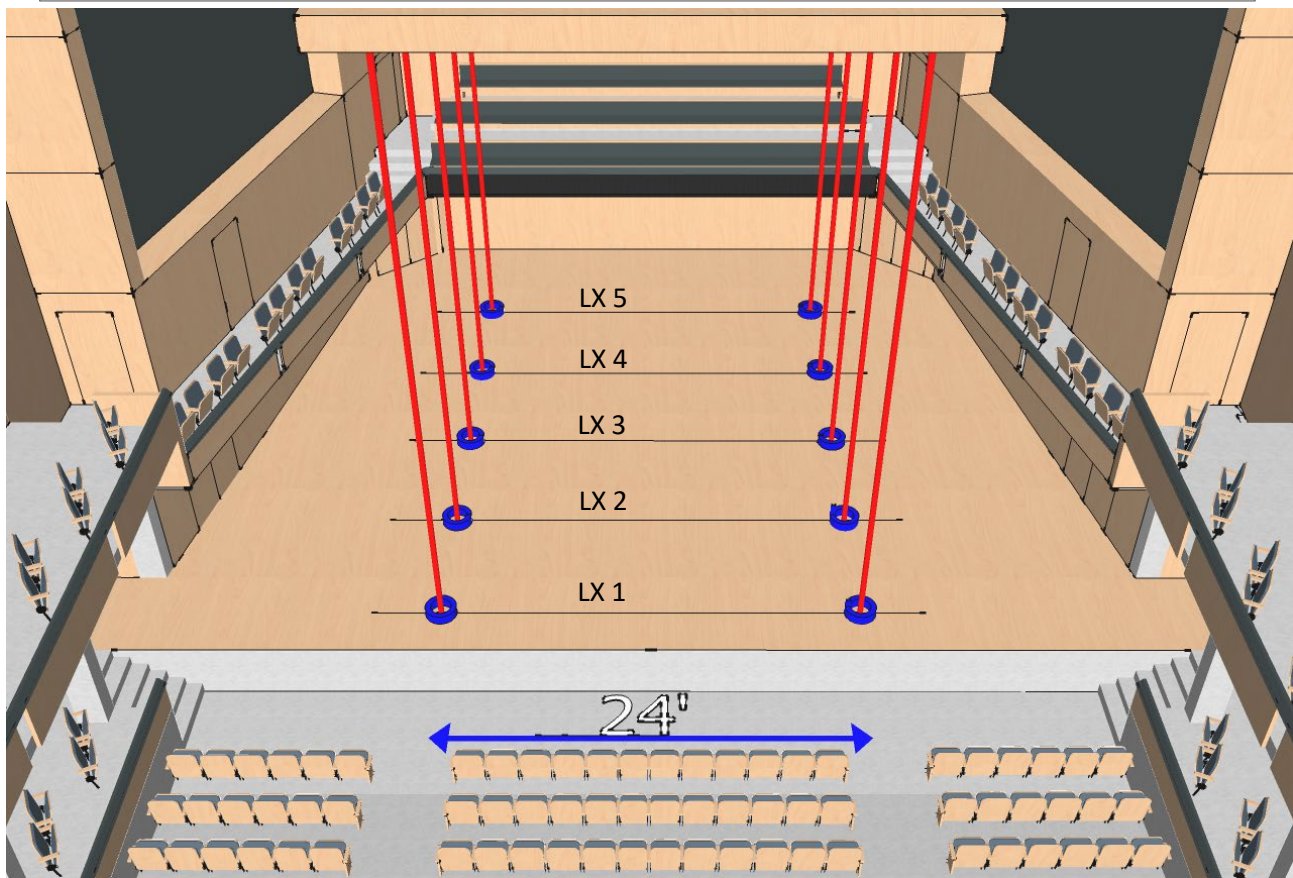
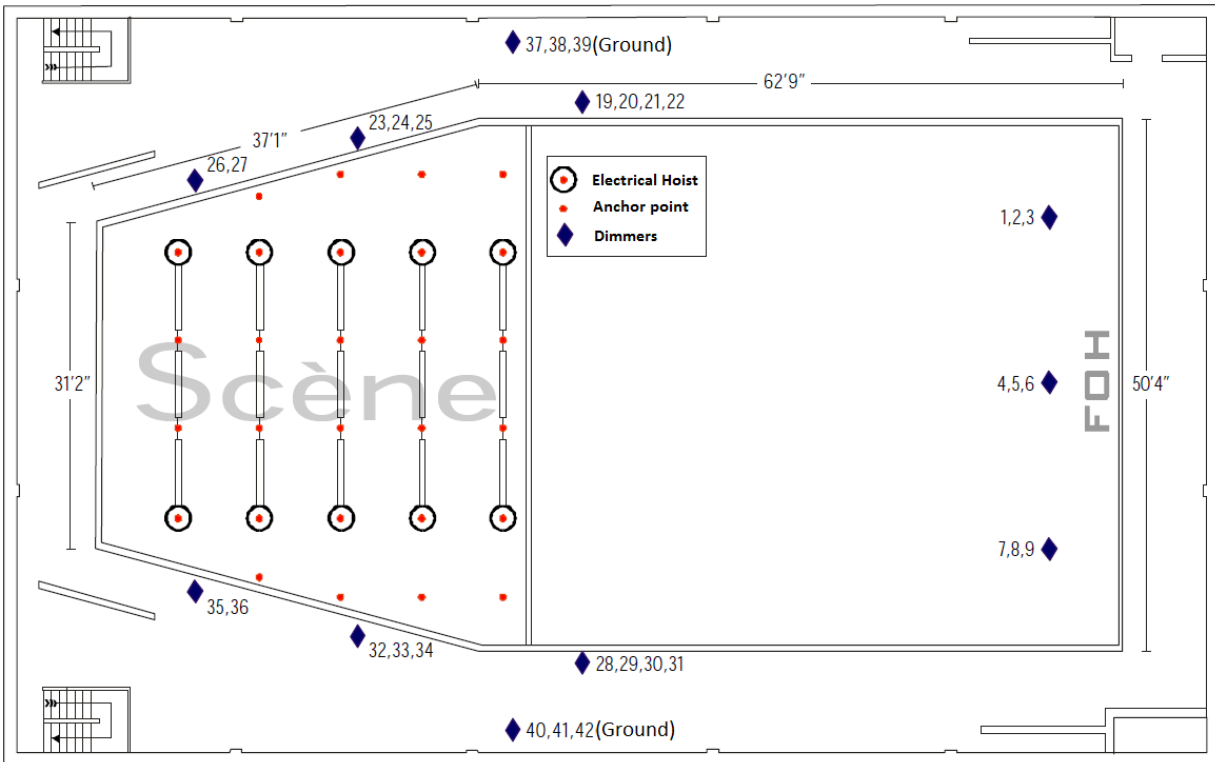
Box-office and reservations:
Guylaine Lévesque: 418 452-8113 ext. 1226 | billetterie@domaineforget.com

Hall Rentals and Event Co-ordinator:
Francine Déry 418 452-8113 ext. 1242 | fdery@domaineforget.com
Daniel Robichaud 418 452-8113 ext. 1246 | drobichaud@domaineforget.com

Annex 1 - Stage dimensions and access



Annex 2 - Electrical plan & Rigging



Annex 3 - Seating plan

